



Bromley Close | Harlow | CM20 2GD

Asking Price £215,000



Bromley Close |
Harlow | CM20 2GD
Asking Price £215,000

A VERY WELL KEPT TWO BEDROOM GROUND FLOOR APARTMENT located just a stone's throw away from the heart of Old Harlow and within walking distance to Harlow Mill Train Station. The property comprises of a spacious entrance hall, fitted kitchen with a range of wall and base units offering open-plan living to both the dining area and lounge. Further features include two generously sized bedrooms, a family bathroom suite and large storage cupboard. This property is being sold with no onward chain. Viewings highly advised.

- Two Good Sized Bedrooms
- Ground Floor Apartment
- Well Presented Throughout
- No Onward Chain
- Council Tax Band: C
- EPC Rating: C

Front

Private parking for residents. Allocated parking space and ample visitor bays.

Entrance Hall

11'09 x 3'04 (3.58m x 1.02m)

Spacious entrance hall with radiator to wall and secure intercom system to wall. Internal doors to bedrooms, bathroom and further storage cupboard. Internal door to kitchen/diner and lounge at the end of entrance hall.

Dining Area

7'03 x 8'11 (2.21m x 2.72m)

A bright and airy dining area with UPVC double glazed window to rear overlooking the communal garden. Radiator to wall. Open plan access to both lounge and kitchen.



 clarknewman





Kitchen

9'00 x 6'01 (2.74m x 1.85m)

A well presented fitted kitchen with a range of wall and base units offering integrated oven, hob and extractor fan above, fridge freezer and plumbing for washing machine. Further features include breakfast bar providing further worktop space, sink/drainage and UPVC double glazed window overlooking communal gardens.

Lounge

11'01 x 12'04 (3.38m x 3.76m)

Large lounge with UPVC double glazed window to front allowing for ample natural light, radiator to wall and open plan access to dining area/kitchen.

Bedroom One

10'10 x 9'07 (3.30m x 2.92m)

Large double bedroom with ample space for wardrobes, UPVC double glazed window to front and radiator to wall.

Bedroom Two

6'01 x 9'06 (1.85m x 2.90m)

Generously sized single bedroom, UPVC double glazed window to front and radiator to wall.

Bathroom

8'08 x 5'04 (2.64m x 1.63m)

Fully tiled family bathroom suite offering large walk-in shower with thermostatic control, white toilet and vanity sink. UPVC double glazed window to rear, chrome heated towel rail and shavers socket to wall.

Local Area

Bromley Close is situated off East Road adjacent to Edinburgh Way. Harlow Mill Train Station is under one mile away with links to Stansted Airport, Cambridge and London Liverpool Street. Old Harlow high street is less than half a mile away on foot with a variety of pubs, restaurants and shops.

Lease Information

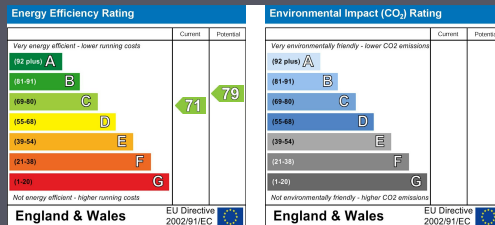
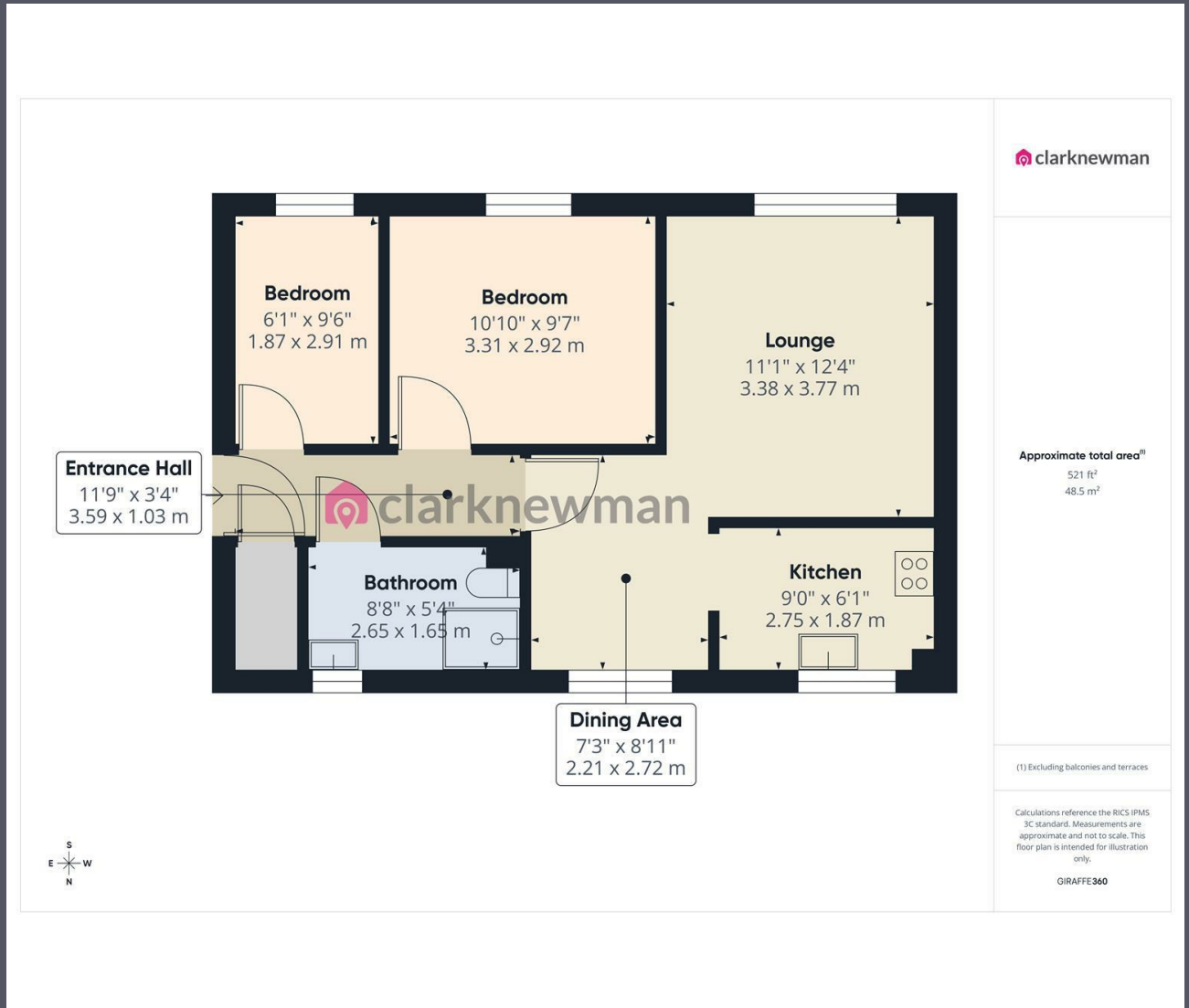
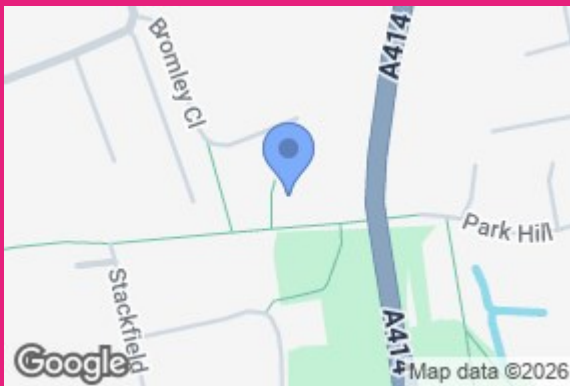
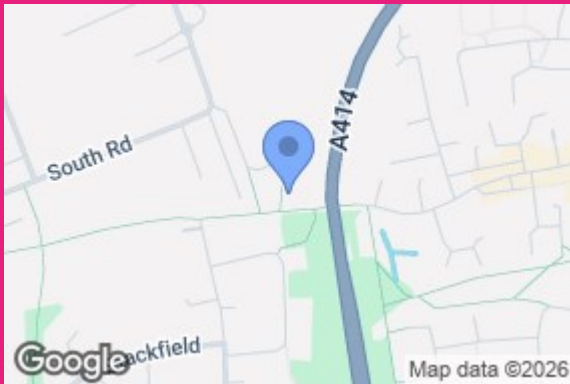
The below figures have been provided to us by the vendors:

Service Charges: £1,530 (per annum).

Ground Rent: included within service charges.

Lease: 136 years remaining.





Equity House
4-6 Market Street
Harlow
Essex
CM17 0AH
01279 400444
hello@clarknewman.co.uk